

LOCAL RESOURCES

Plainview-Hale County Airport

- Two runways: 6,000 ft and 4,000 ft
- 23,000 aircraft operations annually
- Expansion plans in progress

WATER

- 10" line provided by the City of Plainview

SEWER

- 12" line provided by the City of Plainview

ELECTRICITY – 2 Providers

Xcel Energy

- 3-phase along I-27 Frontage Road
- Transmission Voltage: 115 kV
- Primary Voltage: 7,200 / 12,470 V
- Secondary Voltage available upon request

Lighthouse Electric

- 3-phase along Ennis Street
- Transmission Voltage: 115 kV
- Primary Voltage: 7,200 / 12,470 V
- Secondary Voltage available upon request

INTERNET / FIBER – 2 Providers

AT&T

- High-speed fiber along Business Park Drive

Suddenlink

- High-speed fiber along Business Park Drive

GAS

Atmos Energy

2" existing line along Ennis Street
10" main line approx. 800 ft north of site
Ready for loop service extension to Business Park Drive

RAIL ACCESS

BNSF Railway

- Adjacent to the site
- Preliminary engineering completed for extension into the Business Park



**plainview
hale county**

ECONOMIC DEVELOPMENT CORPORATION



**Plainview-
Hale County
Business
Park**

The Plainview-Hale County Business Park is a shovel-ready site, strategically located on Interstate 27—equidistant from Lubbock and Amarillo—and is the perfect location for your industrial or manufacturing business. Plainview and Hale County offer all the resources needed to help make your project a success.

Low Taxes

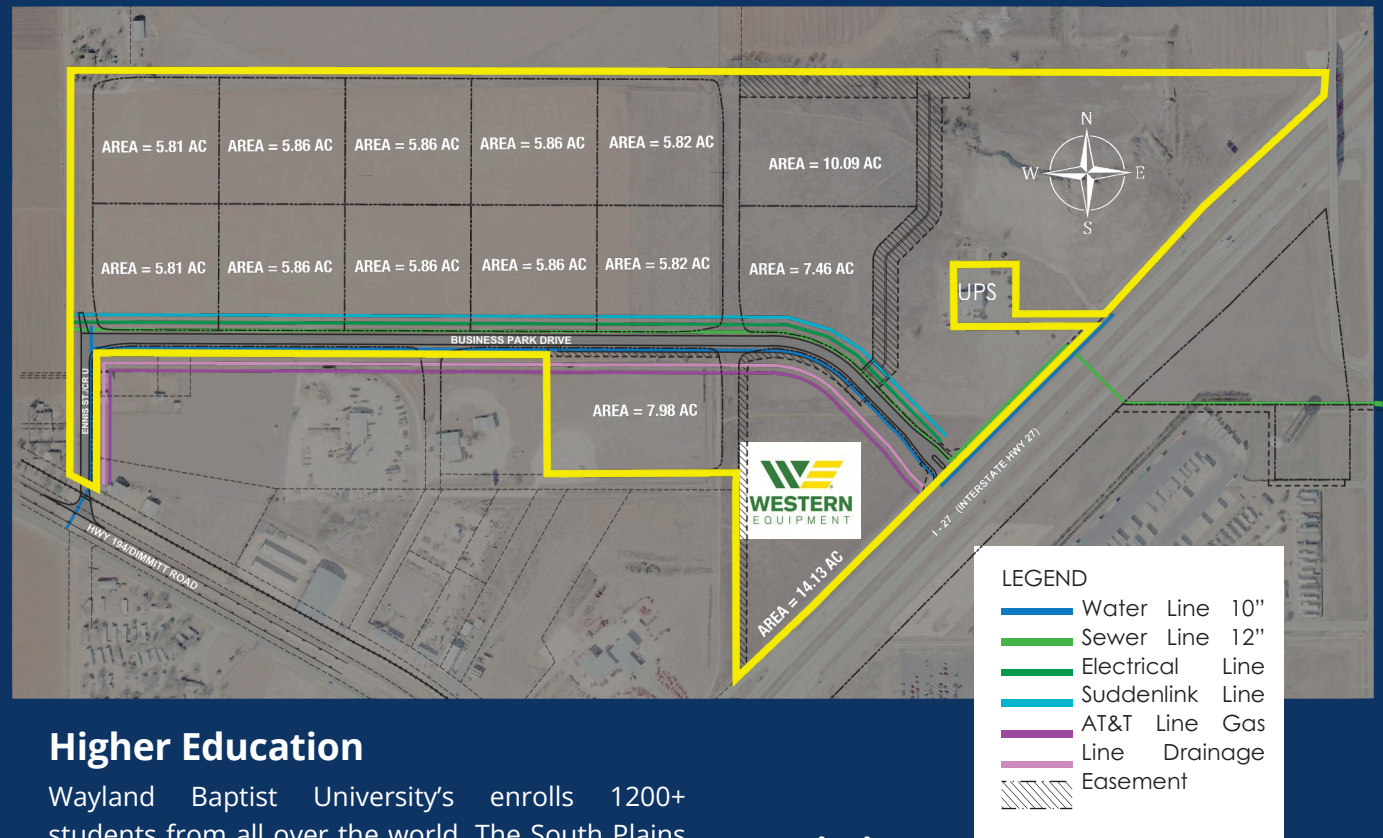
Texas is known for its business-friendly attitude, and Hale County is no exception! There is no personal income tax, no state property tax, and local property taxes remain low compared to other areas.

Low Development Costs

Local permitting is inexpensive, easy, and quick. There are no impact fees like those found in larger communities. Elected officials in Plainview and Hale County are eager to grow the economy, and their incentive programs reflect that commitment.

Inexpensive Energy

Businesses in Plainview and Hale County benefit from electric and natural gas rates that are among the lowest in the nation, making our area an attractive operating environment. Utility companies are business-friendly and focused on economic development. Alternative energy sources—such as wind, solar, and ethanol—also have a strong presence in the region.



Higher Education

Wayland Baptist University's enrolls 1200+ students from all over the world. The South Plains College-Plainview Campus partners with local industries to provide customized workforce training and development to our area labor force.



Logistics

Plainview is easily accessible via Interstate 27 and Interstate 40, and is well connected by highways, air, and rail systems. The city is also part of the **Ports-to-Plains Trade Corridor**, a planned divided highway that will facilitate the transportation of goods from Mexico, through West Texas, to Canada, bringing more trade related businesses to the area.

Experience

Plainview is home to a leading 1.2 million sq. ft. Wal-Mart Distribution Center, Azteca Milling, Andalucia Nuts, Western Equipment, White Energy, and Martin Resources. Each of these companies chose Plainview for its location, supportive business environment, low operating costs and West Texas quality of life.