

The Plainview-Hale County Business Park, approximately 140 acres, is situated along Interstate 27 that is a part of the federally designated Ports to Plains Trade Corridor. This corridor connects to Interstate 40 to provide easy access to East and West Coasts.

WATER

10" line (provided by City of Plainview)

SEWER

12" line (provided by City of Plainview)

ELECTRICITY (2 Providers)

Xcel - Existing 3-phase along I-27

Frontage Road

Transmission Voltage: 115 kV

Primary Voltage: 7200/12470V

Secondary Voltage can be provided upon request

Lighthouse - Existing 3-phase along Ennis.

Transmission Voltage: 115 kV

Primary Voltage: 7200/12470V

Secondary Voltage can be provided upon request

INTERNET/FIBER (2 Providers)

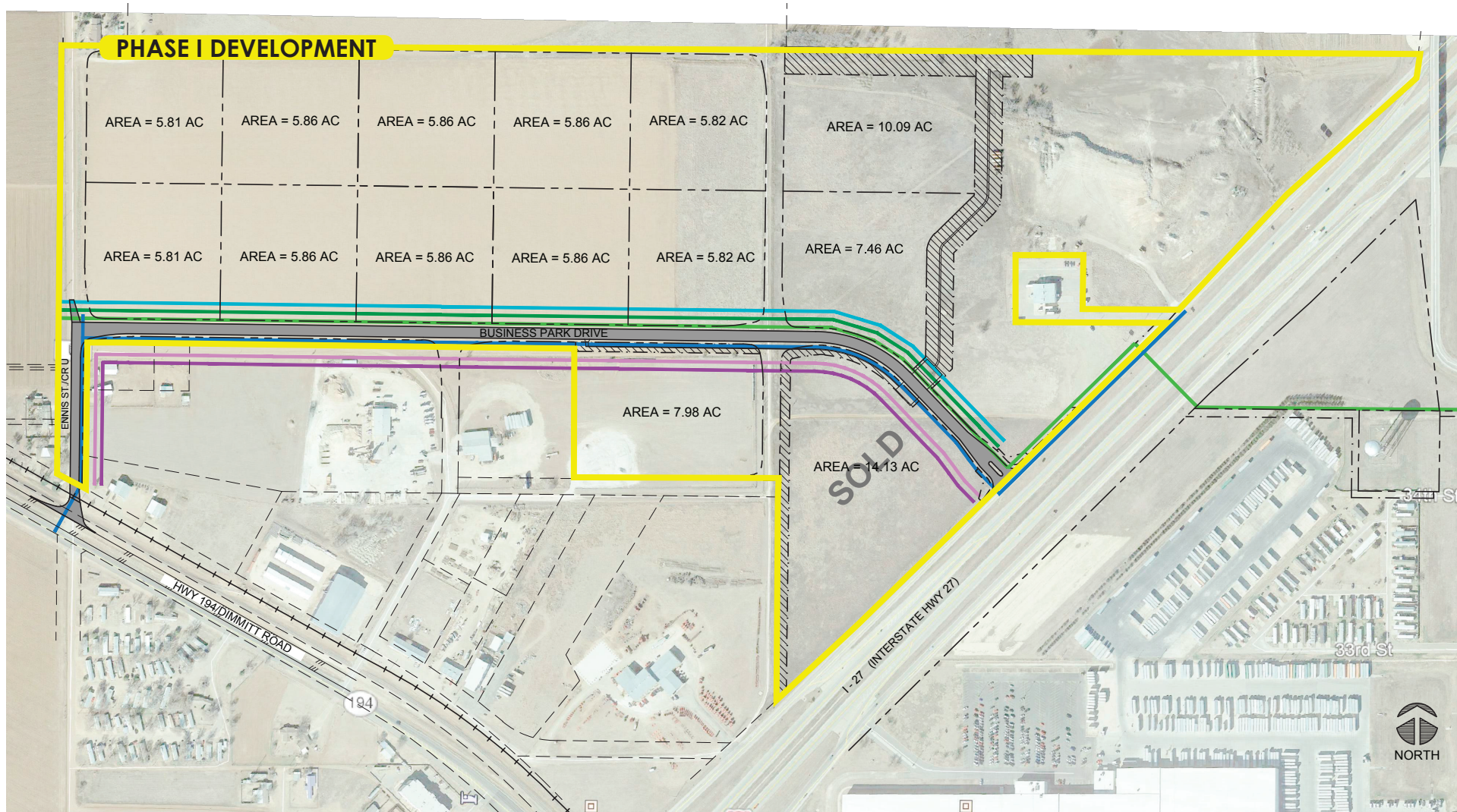
AT&T - high-speed fiber along Business Park Drive

Suddenlink - high-speed fiber along Business Park Drive

GAS

Atmos - Existing 2" line runs along Ennis Street. Existing 10" main line runs approximately 800 ft. north of the site and is readily available for a loop service extension to Business Park Drive when necessary.





If interested in becoming a tenant within the Plainview-Hale County Business Park, please contact:

Plainview EDC

Mike Fox, Executive Director
1906 W. 5th , Plainview, Texas 79072
806.293.8536 (office)
806.685.8942 (cell)
Michael.Fox@PlainviewEDC.org

LEGEND

- Water Line 10"
- Sewer Line 12"
- Electrical Line
- Suddenlink Line
- AT&T Line
- Gas Line
- Drainage Easement